



Sello Roxtec CF 16 EMC

Pasamuros para apantallamiento electromagnético, con marco de perfil bajo.

El Roxtec CF 16 EMC es un sello de entrada de cables de perfil bajo diseñado para mantener la eficiencia de apantallamiento en el recinto. El sello ayuda a proteger la electrónica vulnerable a las amenazas electromagnéticas. El pasamuros está disponible con un marco en acero inoxidable 304 o con revestimiento de polvo, así como en versiones que se pueden abrir para cables ya instalados. Los módulos de sellado Roxtec ES para apantallamiento electromagnético se adaptan a cables de diferentes tamaños.



- Ligero
- Eficiencia de área
- Permite cables precabados

Características del producto



IP/UL NEMA



Protección contra EMI

Estructura de instalación



Armarios envolventes & prefabricados

Calificaciones y certificados

Estandaridad

- IP 66/67, UL/NEMA 4,4X,12,13

Soportes

- Apantallamiento electromagnético
- Ecuilibración de potencia

Dimensiones del marco

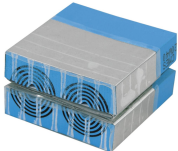
mm/kg

Las variantes de marcos que figuran a continuación son una selección limitada. Para ver la gama completa de marcos y configuraciones, visite [roxtec.com](https://www.roxtec.com).

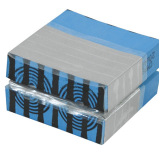
Título	Aperturas de marcos	Espacio útil de sellado	Dimensiones externas WxHxD	Dimensiones de abertura w x h	Peso	N.º de art.
CF 16 EMC	1	40 x 160	93 x 234 x 50	71(+1/-1) x 187(+2/-0.5)	1.7	ECF0000160019
CF 16 EMC AISI304	1	40 x 160	93 x 234 x 50	71(+1/-1) x 187(+2/-0.5)	1.4	ECF0001600221

Datos de los componentes de sellado

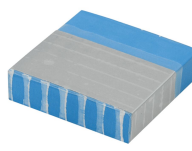
Componentes de sellado



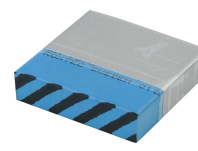
Módulo CM ES con Multidiameter™



Módulo CM PE con Multidiameter™



Módulo de compensación sólido CM ES



Módulo de compensación sólido CM PE



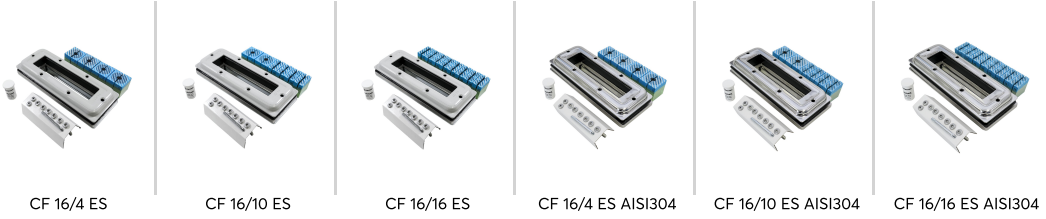
Lubricante Roxtec

Para obtener información detallada, visite [roxtec.com](https://www.roxtec.com).



Kits de sellos preconfigurados

mm/kg



Título	Configuración	Dimensiones externas WxHxD	Dimensiones de abertura w x h	Peso	N.º de art.
CF 16/4 ES	4x (9.5-32.5)	93 x 234 x 50	71(+1/-1) x 187(+2/-0.5)	2.1	5CKT000009943
CF 16/10 ES	8x (3.5-16.5), 2x (9.5-32.5)	93 x 234 x 50	71(+1/-1) x 187(+2/-0.5)	2.2	5CKT000009944
CF 16/16 ES	16x (3.5-16.5)	93 x 234 x 50	71(+1/-1) x 187(+2/-0.5)	2.3	5CSF000008585
CF 16/4 ES AISI304	4x (9.5-32.5)	93 x 234 x 50	71(+1/-1) x 187(+2/-0.5)	1.8	197311
CF 16/10 ES AISI304	8x (3.5-16.5), 2x (9.5-32.5)	93 x 234 x 50	71(+1/-1) x 187(+2/-0.5)	1.8	197313
CF 16/16 ES AISI304	16x (3.5-16.5)	93 x 234 x 50	71(+1/-1) x 187(+2/-0.5)	2	197314

The product information provided by Roxtec does not release the purchaser of the Roxtec system, or part thereof, from the obligation to independently determine the suitability of the products for the intended process, installation and/or use.

Roxtec gives no guarantee for the Roxtec system or any part thereof and assumes no liability for any loss or damage whatsoever, whether direct, indirect, consequential, loss of profit or otherwise, occurred or caused by the Roxtec systems or installations containing components not manufactured by an authorized manufacturer and/or occurred or caused by the use of the Roxtec system in a manner or for an application other than for which the Roxtec system was designed or intended.

Roxtec expressly excludes any implied warranties of merchantability and fitness for a particular purpose and all other express or implied representations and warranties provided by statute or common law. User determines suitability of the Roxtec system for intended use and assumes all risk and liability in connection therewith. In no event shall Roxtec be liable for indirect, consequential, punitive, special, exemplary or incidental damages or losses.

The Roxtec products are offered and sold in accordance with the conditions of the Roxtec General Terms of Sales. The latest version of the Roxtec General Terms of Sales can be downloaded from <https://www.roxtec.com/en/about-us/about-roxtec/general-terms-of-sales/>

We reserve the right to make changes to the product and technical information without further notice. Any errors in print or entry are no claims for indemnity. The content of this publication is the property of Roxtec International AB and is protected by copyright.

This document was generated on: 2024-04-05